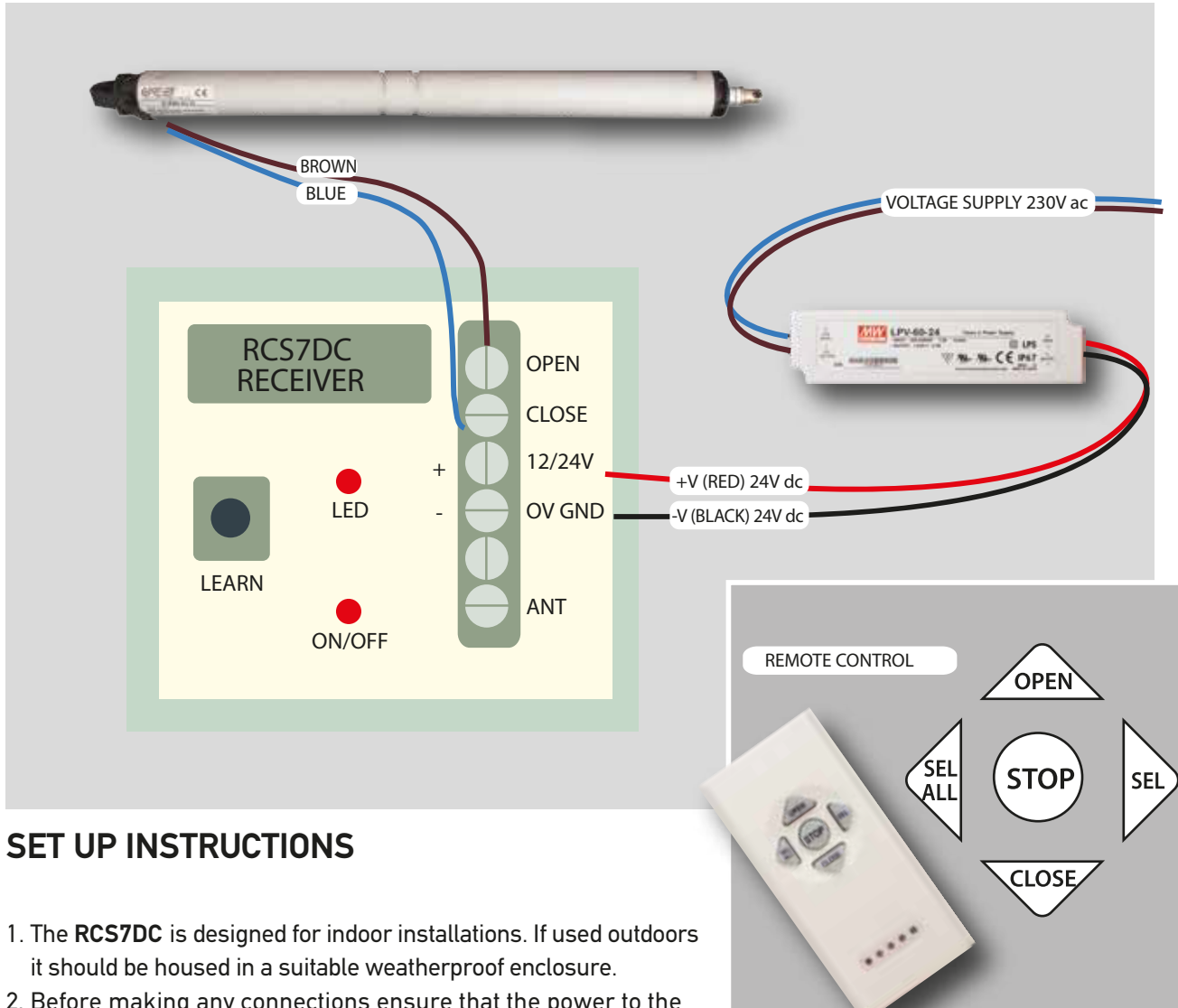




MAMAS STAVROU LTD

ALUMINIUM PERGOLAS, SUNBREAKERS & LOUVERS

ELECTRIC PARTS ASSEMBLY FOR APERGOLA / SHADE MECHANISM



SET UP INSTRUCTIONS

1. The **RCS7DC** is designed for indoor installations. If used outdoors it should be housed in a suitable weatherproof enclosure.
2. Before making any connections ensure that the power to the equipment you are connecting to is switched off.
3. Connect the **GND** and **12/24V** terminals to a 12 or 24 Volt DC **SUPPLY**, if the supply is dc ensure positive is connected to the positive terminal, if unsure use a voltmeter to determine the polarity. The receiver must learn the code of the transmitters before they can be used.
4. Switch on the power source supplying the controller and programme the transmitters.
5. Press and release the **LEARN** button, then the red **LED** will light.
6. Press either of the transmitter buttons. The red **LED** light will flash and then turn off. The transmitter is now programmed and ready to use.
7. Repeat the above for additional transmitters.
8. Switch off the power source and make the connections between the **RCS7DC** and the motor to be controlled, switch on the power and check operation.
9. To erase the receivers' memory (delete transmitter codes) press the **LEARN** button for 10 seconds
10. The **RECEIVER** and the transformer must be placed in a waterproof Electrical Box.

*** RECEIVERS and REMOTE CONTROLS are already PRE-PROGRAMMED**

MAMAS STAVROU LTD www.mamastavrou.com

Polifimos 8&9 Street, Strovolos Industrial Area t. 22429151, 22420069